

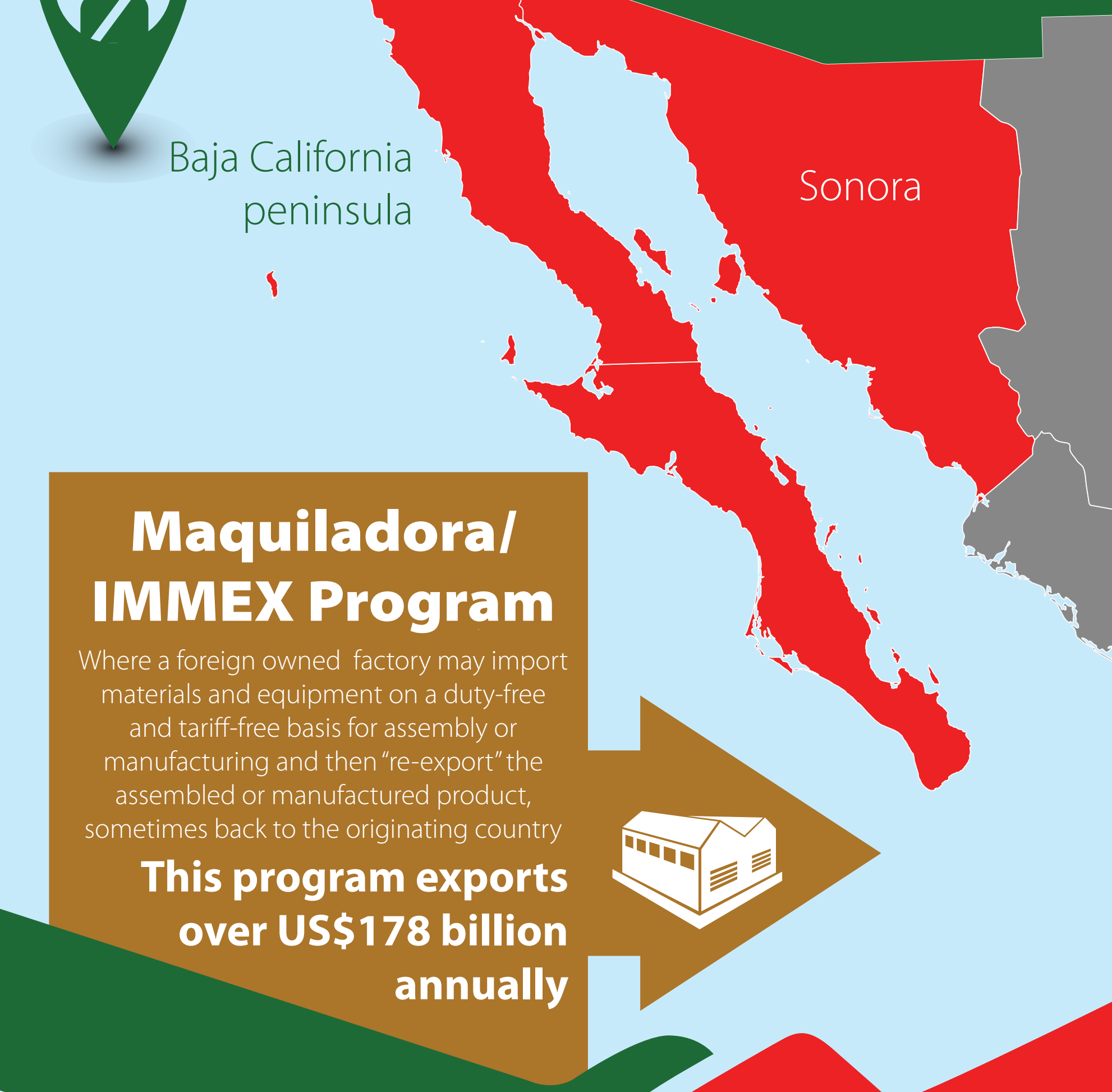
MEXICO

GDP: US\$1.367t (2015 estimate)

Population: 119.5m (2014 est.)



Strengths



Maquiladora/IMMEX Program

Where a foreign owned factory may import materials and equipment on a duty-free and tariff-free basis for assembly or manufacturing and then "re-export" the assembled or manufactured product, sometimes back to the originating country

This program exports over US\$178 billion annually

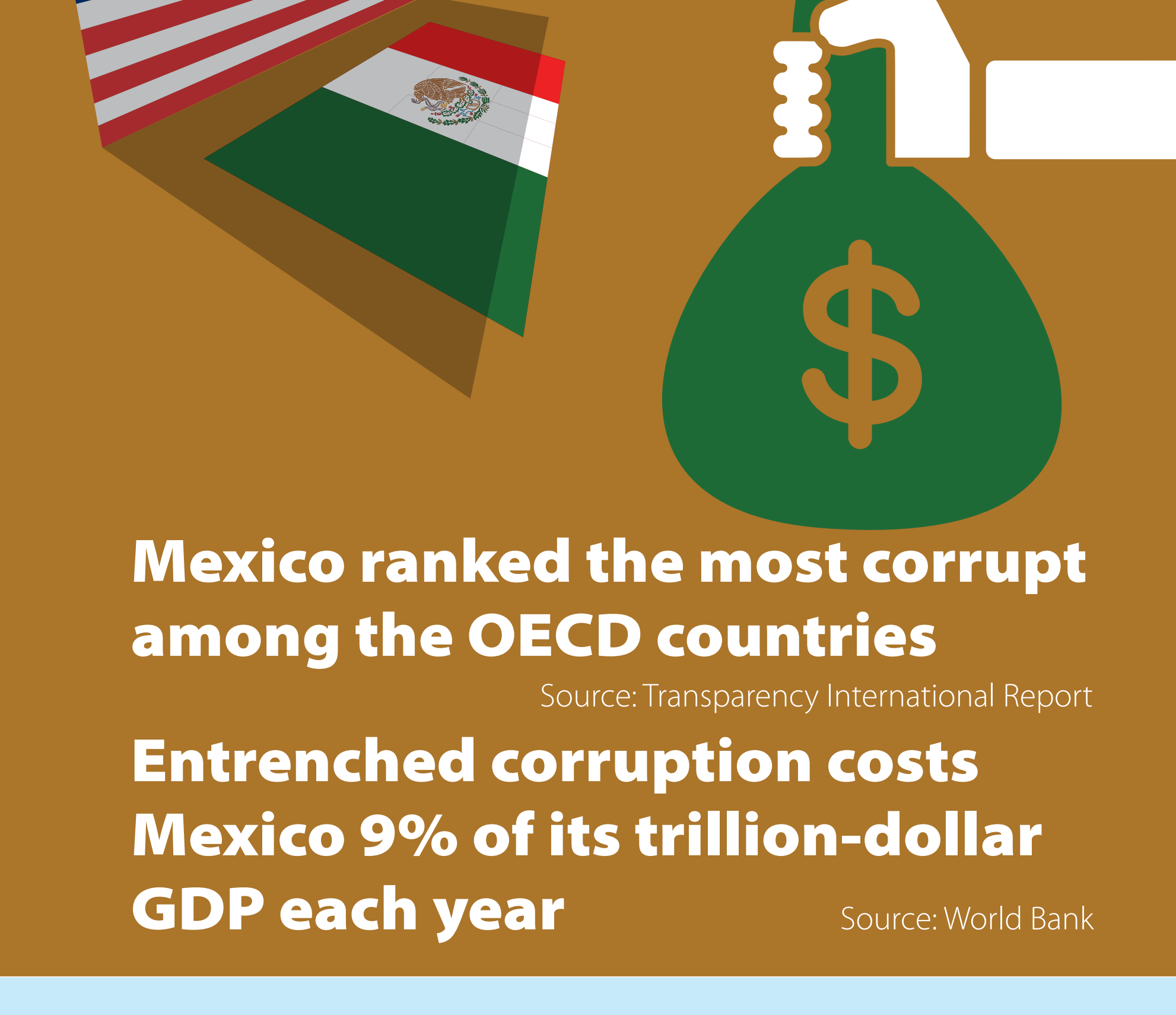


NAFTA & WTO Trade Agreements

1: 1993-2012, trade between the three members quadrupled, from \$297 billion to **\$1.6 trillion**

2: NAFTA has increased Mexican wages by **1.3%**

Weaknesses



Opportunities



Threats



Key Ports

