

Innovative Home Battery for Maximum Flexibility

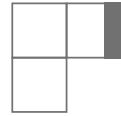
RESU FLEX offers three types of House Fits which fit each customers' energy usage pattern



Watch the Video

Battery Protection Unit Battery Module

LIGHT FIT

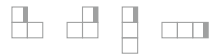


- An affordable solution for beginners
- Shaving peak hours' loads in daily use
- Back up critical loads in emergency
- Self Consumption

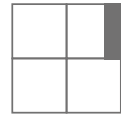
Battery Protection Unit
+ **2** Battery Modules

8.6 kWh

6 configurations



STANDARD FIT



- A powerful solution for energy independence
- Back up critical loads in emergency
- Cover energy consuming devices (Heat pumps, EVs)

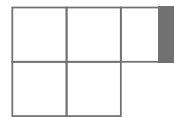
Battery Protection Unit
+ **3** Battery Modules

12.9 kWh

12 configurations



COMPLETE FIT



- A versatile solution with wide application from home to small C&I
- Whole Home Back-up*

Battery Protection Unit
+ **4** Battery Modules

17.2 kWh

21 configurations



* This feature is dependent on the functionality of the inverter.



LG Energy Solution

Make Your Own Energy

RESU FLEX

Innovative Home Battery for Maximum Flexibility



LG Home Battery RESU

www.lghomebattery.com

All contents are subject to change without notice
Copyright© 2022 by LG Energy Solution. All rights reserved





INSTALLATION FLEXIBILITY

Regardless of your environment, the RESU FLEX will fit anywhere in your home. More than 30 different installation forms to maximize space efficiency.

RESU FLEX is built upon the skill and devotion of engineers and designers who have dedicated themselves to the pursuit of perfection. Battery units can be connected in many different ways to offer the optimal capacity for each household.

Floor-Standing type



BATTERY MODULES

BATTERY PROTECTION UNIT



BATTERY MODULE
48.9kg

+



BATTERY PROTECTION UNIT
16.6 kg

=



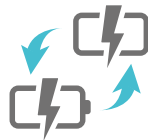
ENERGY EXPANSION FLEXIBILITY

Whether you want a small capacity to meet your essential loads, or a large capacity to meet additional loads, we have just the right option for you.



ON-THE-SPOT MAINTENANCE

In case of a problem, there's no need to worry as it will be fixed on the spot by simply replacing the battery module. Replacing on site saves maintenance time and cost.



REAL-TIME MONITORING

Check on the battery status anytime with the RESU Monitor app. Can help you accurately monitor your solar production and home energy consumption for precise, real-time insight to your home energy.



PRODUCT SAFETY

Globally certified, with a 10 years warranty, we guarantee your peace of mind. IEC, CE, UL(UL9540A) certified.



SPECIFICATION

ELECTRICAL CHARACTERISTICS

| Model Name | FLEX 8.6 | FLEX 12.9 | FLEX 17.2 |
|---|-------------------------|-----------|-----------|
| Number of Battery Modules | 2 | 3 | 4 |
| Usable Energy (DoD100%) [kWh] | 8.6 | 12.9 | 17.2 |
| Voltage Range [V] | 192-265.6 | 288-398.4 | 384-531.2 |
| Max. Charge/Discharge Current [A] | 22 | 22 | 22 |
| Max. Charge/Discharge Power [kW] | 4.3 | 6.5 | 8.5 |
| Peak Power (only discharging, for 3 sec.) | 5 | 7 | 11 |
| Dimensions ¹⁾ [W × H × D, mm] | 665.2 × 665.2 × 148.4 | | |
| Weight ¹⁾ [kg] | Battery Module | | 48.9 |
| | Battery Protection Unit | | 16.6 |
| Communication Interface | RS485 & CAN | | |
| Maximum Protection voltage [V] | 1,000 | | |
| DC Protection | Circuit Breaker | | |
| Phase | Single & 3-phase | | |

OPERATING CONDITIONS

| | | |
|-------------------------------------|--------------------------------|----------|
| Installation Location | Indoor / Outdoor | |
| Installation Type | Floor-Standing & Wall Mounting | |
| Operating Temperature [°C] | Charge | -10 ~ 50 |
| | Discharge | -10 ~ 50 |
| Operating Temperature (Recommended) | 20 ~ 30 | |
| Ingress Rating | IP55 | |

CERTIFICATION

| | | |
|----------|---------------------------|---|
| Safety | Cell | UL1642, IEC62619 |
| | Battery Pack | CE, RCM, UL1973, IEC62619, IEC62477-1, UL9540A, FCC, IEC61000-6-1/-2/-3 |
| Warranty | 80%@10 years (in Germany) | |

Compatible Inverters : KOSTAL (3-phase), Fronius (Single & 3-phase), Goodwe (3-phase), SMA (3-phase)

* Values provided for 25°C

¹⁾ Without Design Cover and Standing Bracket